

Introducing

HyDraw[®] CAD Vault

The screenshot displays the HyDraw CAD Vault software interface. The main window shows a hydraulic circuit diagram with various components like valves, pumps, and actuators. The interface includes a menu bar, a toolbar, and several panels:

- HYDRAW LIBRARY EXPLORER:** A panel on the left showing a library of hydraulic symbols. The search bar is set to "Component Type".
- HYDRAW PROPERTY MANAGER:** A panel on the right showing the properties of the selected item (System). It includes sections for Symbol, Design requirements, Model data, and Accessories.
- Diagram:** A central workspace showing a hydraulic circuit diagram with various components and connections. The diagram is overlaid on a grid.
- Tables:** Two tables are visible in the bottom right of the diagram area, listing item details.

ITEM ID	MODEL CODE	QUANTITY	COST	DESCRIPTION	MANUFACTURER
2	VQSLMLB-38A**	1		COUNTERBALANCE VALVE	MALVAL
9	D11M0036**	1		DIRECTION CONTROL VALVE	PARKER
10	RF2-50DF-C3-VULT	1		FLOW CONTROL VALVE	CBF HYDRAULIC
17	SDRE10P77XKYG2P	1		PRESSURE REDUCING VALVE	BOSCHREXROTH

ITEM ID	MODEL CODE	QUANTITY	COST	DESCRIPTION	MANUFACTURER
1	RP25-F03-P**	1		PRESSURE REDUCING VALVE	CBF HYDRAULIC
6	D11M0036**	1		DIRECTION CONTROL VALVE	PARKER

Additional information from the Property Manager:

- Symbol:** Exclude from Parts List (unchecked)
- Item ID:** 4
- Assembly ID:** 4
- Balloon Style:** Rounded Rectangle
- Display Setting:** (dropdown)
- Design requirements:** Flow (gpm), Pressure (psi)
- Model data:** Model Code: 04.94.03.00.09.01, Model Family: SEL-N-14-V, Part Number, Description: Shuttle Valve, Manufacturer: Bosch Rexroth, Cost, Assembly Cost, List Price, Rated Flow (gpm): 10.6, Pressure Loss, Rated Pressure: 5076, Type, Part Size, Catalog Number

Introducing HyDraw® CAD Vault

HyDraw CAD Vault

Access Panel

Log In/Log Out
Open
Go To Workspace

Vault Options

Options
Revision Table Mapping
Content and Filters

File Status Panel

Refresh
Check In/Check Out

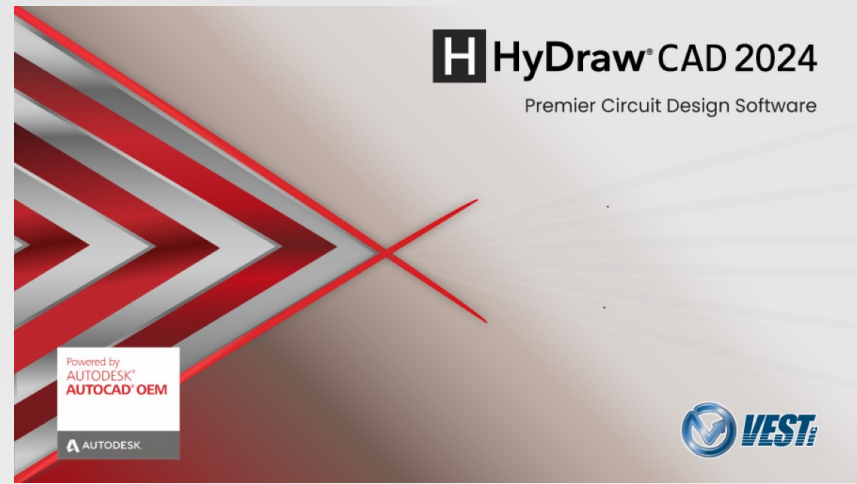
Control Panel

Change Category
Change State
Revision Commands



Vault Introduction

Since HyDraw CAD is built on the AutoCAD OEM Engine, AutoDesk Vault integration is not included. With the new HyDraw CAD Vault Interface, this direct integration is now achievable.



Pre-Requisites required for using the HyDraw CAD Vault Interface include:

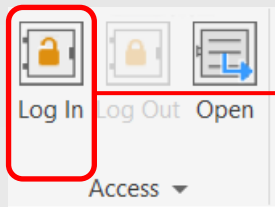
- AutoDesk Vault Professional 2023 Client installed on the same system as HyDraw CAD.
- AutoDesk Vault Professional 2023 Server installed on the server hosting the Vault Server application.
- An active AutoDesk Vault license.

Access Panel

Accessing Vault within HyDraw[®] CAD

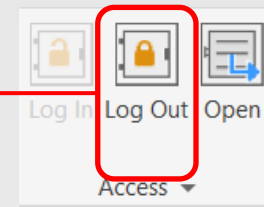
Log In/Log Out

Log In and Out of Vault directly from within HyDraw CAD



Log In to AutoDesk
Vault directly within
HyDraw CAD

Log Out of AutoDesk
Vault within HyDraw
CAD



Log In

Authentication Vault Account

User Name Vault

Password *****

Server

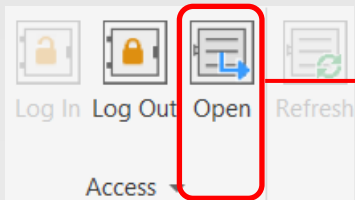
Vault Valut2023

OK Cancel <<

Enter Vault server credentials

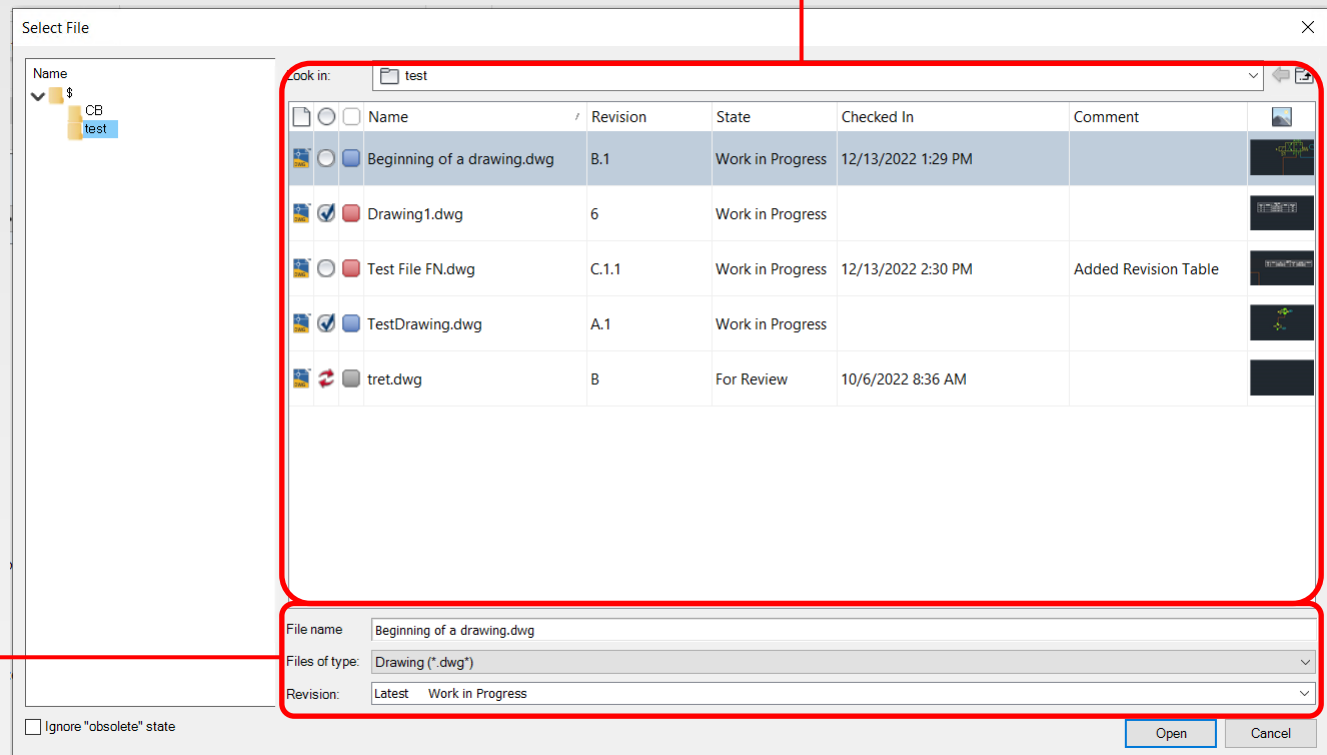
Note: Only AutoDesk Vault 2023 is supported by HyDraw CAD 2024.

Open files stored within Vault directly in HyDraw CAD



Directly open Vault files within HyDraw CAD

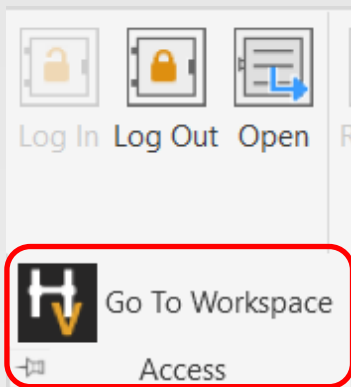
Quickly view the status of files within Vault



Edit the details of the selected file prior to opening

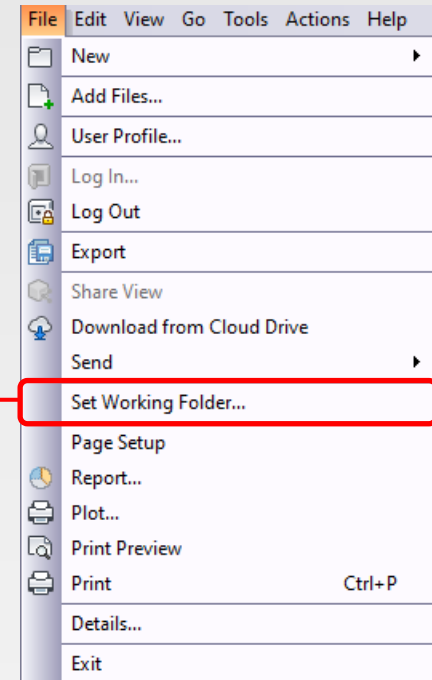
Go To Workspace

View the Working Folder



View the Working Folder containing local copies of Vault files

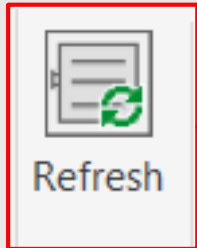
The Working Folder can be set in Vault Client application



File Status Panel

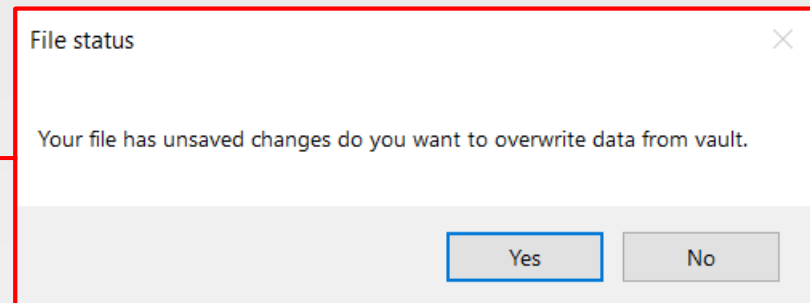
Manipulate File Status directly from within HyDraw[®] CAD

Refresh the Local File directly within HyDraw CAD



Refresh the file stored within the local working file with the file currently in Vault

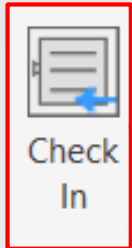
Any changes made to the local drawing will be overwritten by the Vault drawing



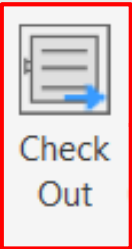
Note: Any open file in the local working folder will be updated with the correct version of the leading revision currently stored in the specified Vault.

Check In/Check Out

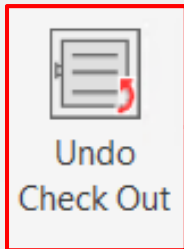
Check In and Check Out files from Vault



Check in the opened file and replace the latest version of the file within Vault



Check out the currently opened file to make edits on the Vault server version of the file



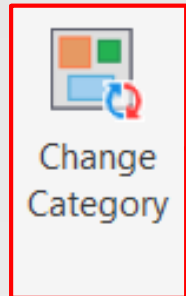
Retract the check out of a file and return the file to Vault with no changes

Control Panel

Control File Workflows directly within HyDraw[®] CAD

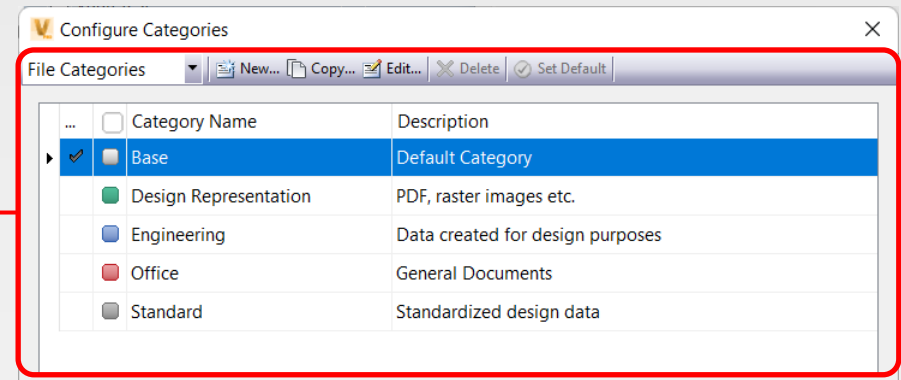
Change Category

Change File Categories directly within HyDraw CAD



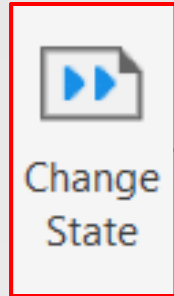
Change the category of the currently open file from directly within HyDraw CAD

Categories are defined within Vault Client application and utilized within HyDraw CAD



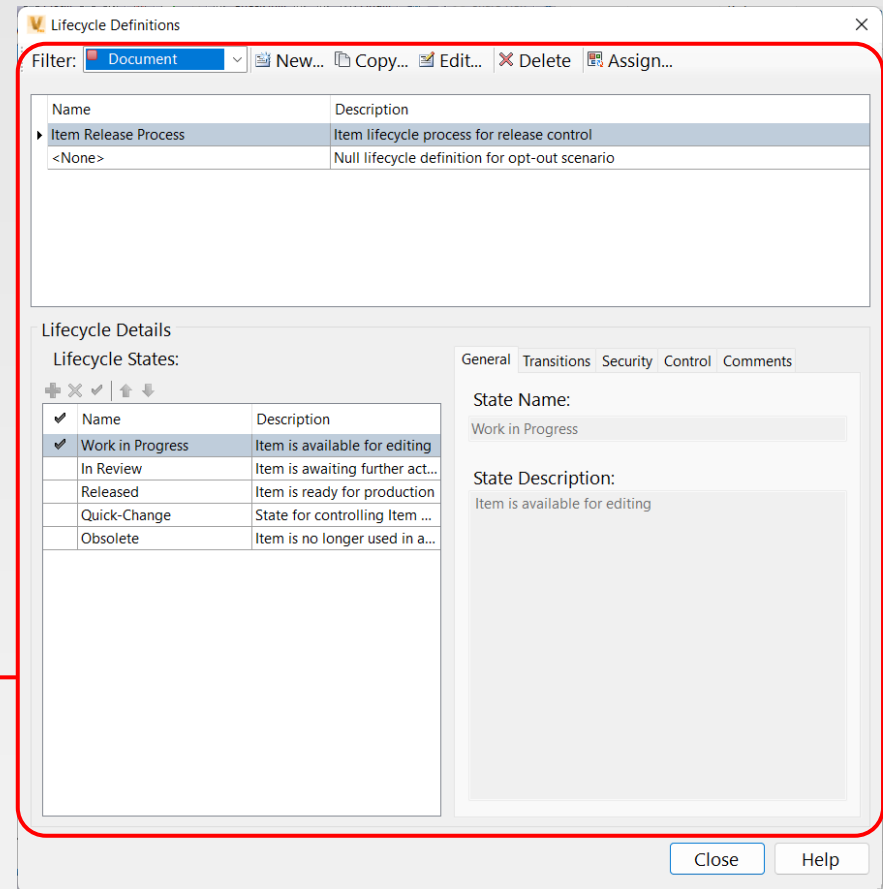
Change State

Change File State directly within HyDraw CAD

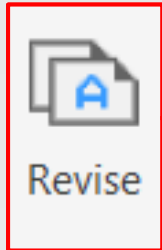


Change the state of the currently open file directly within HyDraw CAD

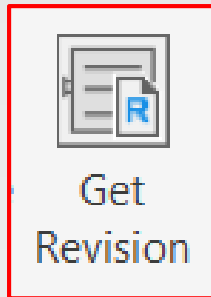
Lifecycles and states are defined within Vault Client application and used within HyDraw CAD



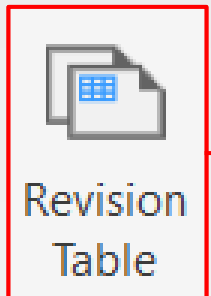
Revision Commands



Create a revision of the current file. Define the revision type and add any comments regarding the revision.



Open a previous revision of the currently open file from Vault.



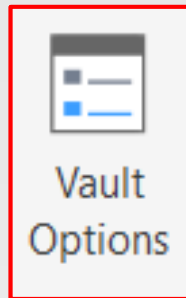
Insert a revision table into the currently checked out file. The revision table format is defined within the Options command within the Vault tab.

Note: Revision Schemes are defined within the Vault Client Application and used within HyDraw CAD

Options

HyDraw CAD Vault Options

Options



Open the options dialog for HyDraw CAD Vault options

Store login information to automatically login to Vault upon opening HyDraw CAD

Vault Options

Automatic login next session

Enable Revision Table control

Regulate Revision Table formatting by disabling editing capabilities

Revision Table Mapping

Toggle bias control to display whether only properties in a released revision are displayed. For more information on bias control, see [here](#).

The screenshot shows the 'Mappings' tab of a dialog box titled 'Match the revision table column information to Vault properties'. The dialog has three tabs: 'Mappings', 'Content', and 'Filters'. The 'Mappings' tab is active, showing a table with two columns: 'Column Header' and 'Vault Properties'. The 'Revision' row is selected. To the right of the table are three buttons: a plus sign in a square (Add a new row), a red X in a square (Delete the selected row), and two arrows (Move the selected row up or down). Below the table is a 'Title' field containing 'Revision History'. At the bottom are 'OK' and 'Cancel' buttons. Red lines and boxes highlight the 'Vault Properties' column, the 'Revision' row, the three action buttons, and the 'Title' field. Annotations with red lines point to these elements from the surrounding text.

Column Header	Vault Properties	
Revision	Revision	<input type="checkbox"/>
Description	Comments	<input type="checkbox"/>
Date	Checked In	<input type="checkbox"/>
Approved	Engr Approved By	<input type="checkbox"/>
DWG Version	DWG Type	<input type="checkbox"/>

Map file properties from Vault

Add a new row

Delete the selected row

Move the selected row up or down

Set the title for the Revision Table

Title: Revision History

OK Cancel

Content and Filters

Mappings Content Filters

Configure the type of information to be displayed within the revision table

Populate information using Last Version

From the Last Released state information

Limit number of rows 8

Decide which revision data should be included within the revision table

Limit the number of revision table rows to save space in the drawing

Include or exclude certain revisions and revision levels within the revision table

Mappings Content Filters

Set up filters to omit information in the revision table

Display revision at the following levels

Primary Secondary Tertiary

Apply precedence rules to display only

Lower Revision levels

Higher Revision levels

Omit the initial revision row

HyDraw® CAD Vault

Keeping Workflows Integrated

USA: +1 (248) 649-9550 sales@VESTusa.com
Europe: +39 328 695 7001 carlo.molon@VESTusa.com

